



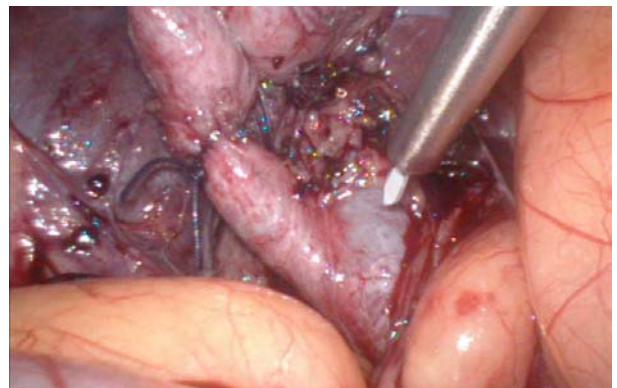
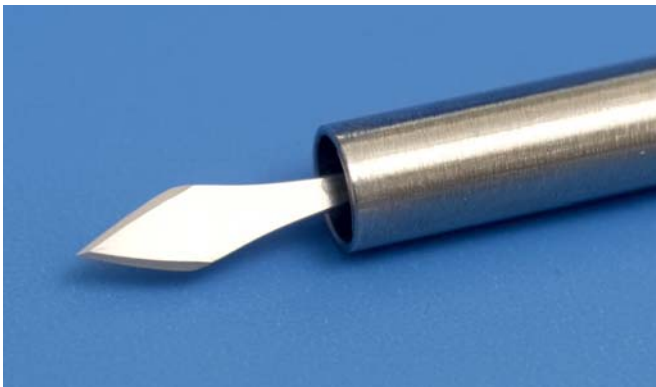
Espiner Medical Ltd

The E-Knife



The disposable E Knife , specially developed for laparoscopic bile duct exploration, is used through a 5mm cannula.

The diamond shaped blade is deployed and locked in position by a single movement activating a spring loaded mechanism



A very precise incision is possible without pressure or deformity of the duct wall ensuring maximal safety in this delicate procedure

